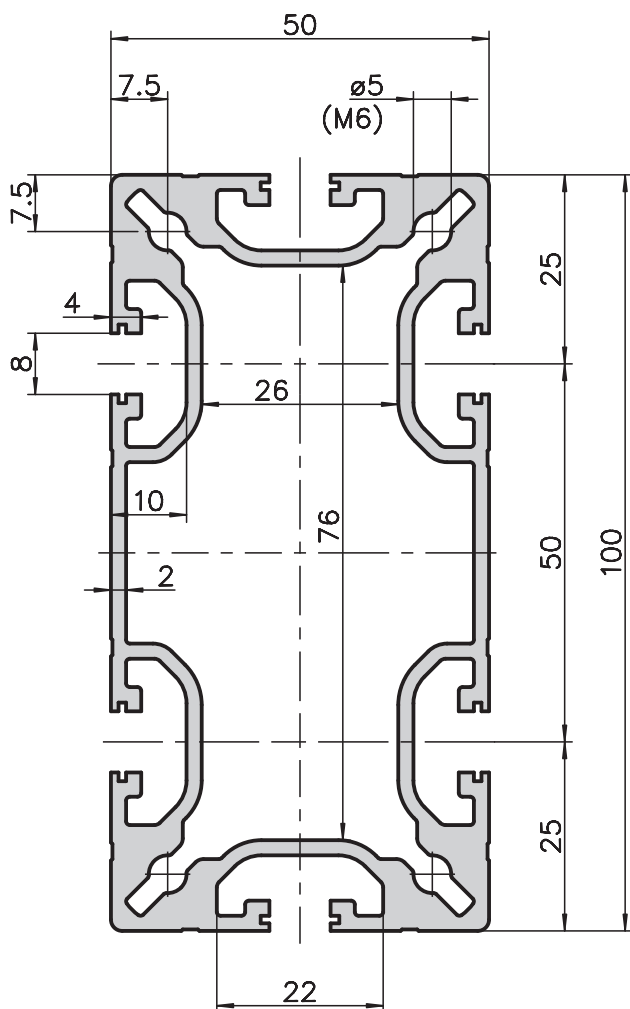
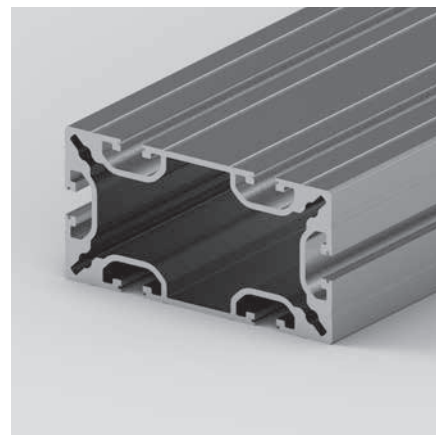


## Counterweight extrusion 50x100 type A19-2



## Application

Counterweights can be inserted into this extrusion for vertical sliding doors. This is a combination extrusion of base 40 + 50. The slots are based on the geometry of base 40 which is why base 40 accessories are the most suitable to use. This extrusion can be connected to the PVSDirect (page 149).



## Technical data

I <sub>x</sub>	=	41.82 cm <sup>4</sup>
I <sub>y</sub>	=	16.43 cm <sup>4</sup>
W <sub>x</sub>	=	8.36 cm <sup>3</sup>
W <sub>y</sub>	=	6.57 cm <sup>3</sup>
Cross-section area	=	12.33 cm <sup>2</sup>
Weight	=	3.33 kg/m

## Order data

## Order number

Counterweight extrusion 50x100	
Standard length 6000mm	A19-2-01/6000
Cut to length	A19-2-02-02/...