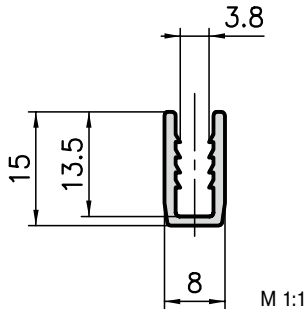


8x13.5 U-clamping extrusion type B19-6



Application

A special extrusion for clamping the wire mesh. The U-extrusion fits into all extrusions with a base of 50, 40 and 30 mm.

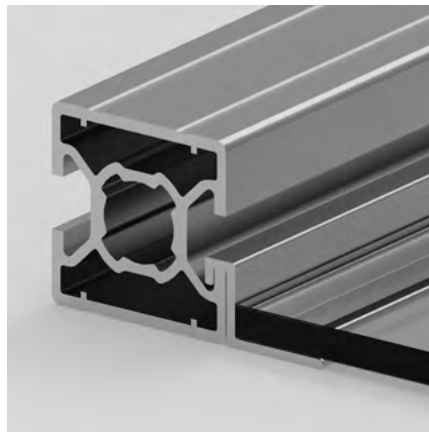


Technical data

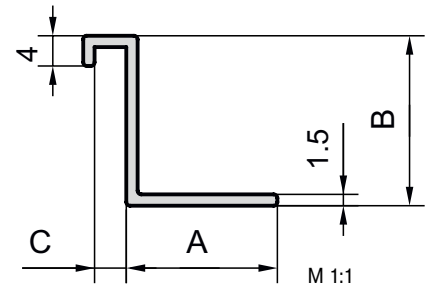
Cross-section area	= 0.53 cm ²
Weight	= 0.14 kg/m
Alloy	EN AW-6060

Order data Order number

8x13.5 U-clamping extrusion	
Standard length 5000 mm	B19-6-5M
8x13.5 U-clamping extrusion	
Cut to length	B19-6-02-02/...



Suspension extrusion base 30 / base 50



Measurements

Type	Base	A	B	C
S91-013	30	16.5	12.5	2.2
S91-014	50	20.0	22.5	4.0

Application

The suspension extrusion for aluminium extrusion of the base 30 and 50 is flush with the extrusion. It is used for supporting surface elements such as glass, etc. No fixing screws are required for this. No fixing screws are required for this as the panel elements are simply laid on top.

Technical data

Cross-section area	= 0.5 cm ²
Weight	= 0.14 kg/m
Alloy	EN AW-6063

Order data Order number

Suspension extrusion base 30	
Standard length 5000 mm	S91-013
Suspension extrusion base 30	
Cut to length	S91-013-02-02/...
Suspension extrusion base 50	
Standard length 5000 mm	S91-014
Suspension extrusion base 50	
Cut to length	S91-014-02-02/...