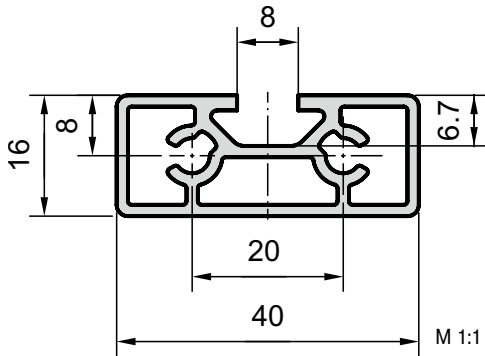
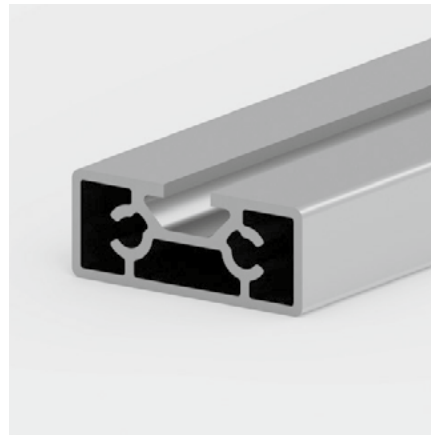


Slot extrusion 16x40 Type B19-4



Application

The slot extrusion has a standard base 30 and the core hole spacing is selected so that the screw heads do not protrude laterally with countersunk screws (M5), so that a surface, for example, can be attached elegantly at the side.

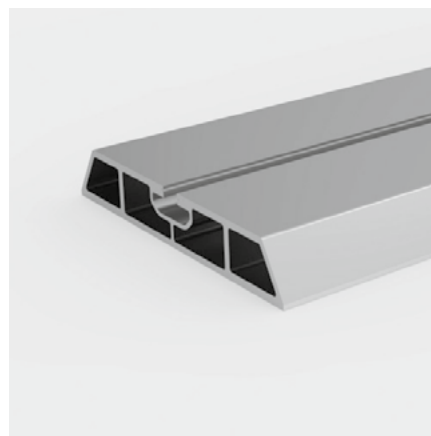


Technical data

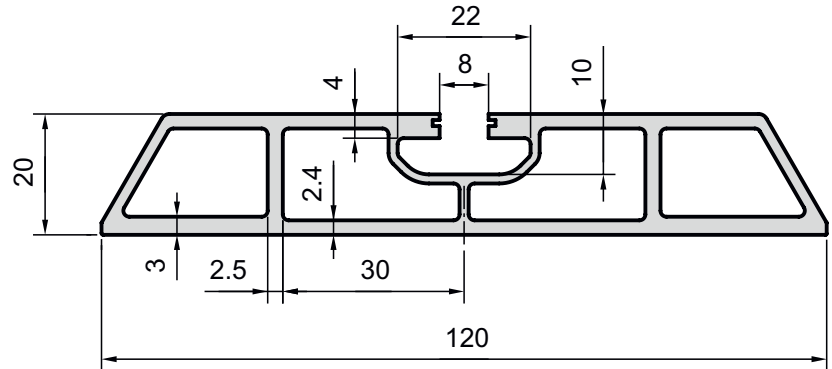
Cross-section area	=	2.45 cm ²
Weight	=	0.66 kg/m
Alloy		EN AW-6063

Order data Order number

Slot extrusion 16x40	
Standard length 5000 mm	B19-4-5M
Slot extrusion 16x40	
Cut to length	B19-4-02-02/...



Wall rail 20x120 Type C08-4



Application

As the name suggests, this cross-section is often screwed to a wall so that installations can be attached to the central groove. Grey end caps are available for the open ends.

Technical data

Cross-section area	=	7.7 cm ²
Weight	=	2.1 kg/m
Alloy		EN AW-6063

Order data Order number

Wall rail 20x120	
Standard length 5000 mm	C08-4-5M
Wall rail 20x120	
Cut to length	C08-4-02-02/...