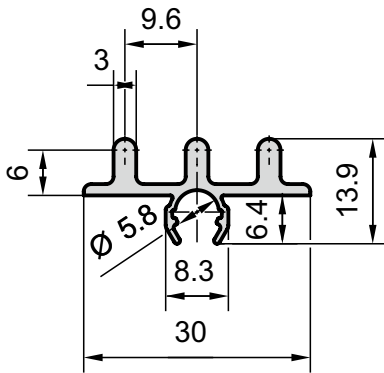
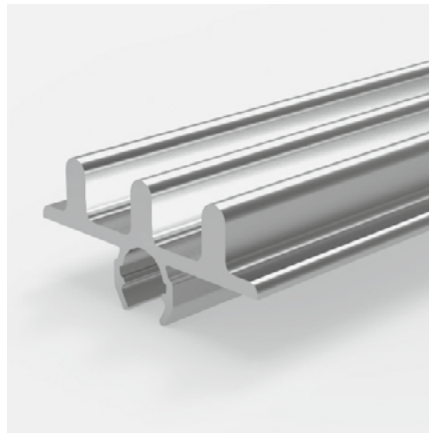


## 3-fold roller guide Type B06-3



### Application

The roller guide is ideal for glass sliding doors. Three sliding doors on rollers can be realised in the smallest of spaces. The profile is simply clipped into the support profiles for fastening.



### Technical data

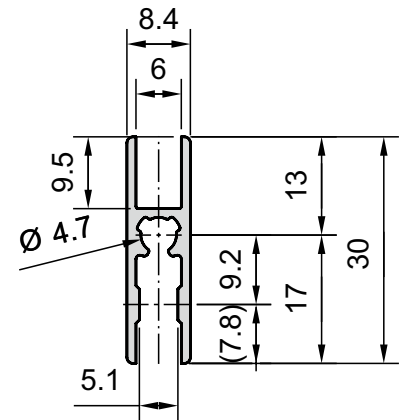
Cross-section area	=	1.08 cm <sup>2</sup>
Weight	=	0.30 kg/m
Alloy		EN AW-6060

### Order data

Order data	Order number
3-fold roller guide	
Standard length 5000 mm	B06-3-5M
3-fold roller guide	
Cut to length	B06-3-02-02/...



## Glass rail 5 mm Type B06-4



### Application

The glass rail can accommodate surfaces up to a thickness of 6.0 mm in the upper area. These are glued into the groove base. In the lower area, the filigree profile has a thickening to accommodate rollers. Together with the roller guide profile, smooth-running sliding doors can be realised in confined spaces.

### Technical data

Cross-section area	=	0.91 cm <sup>2</sup>
Weight	=	0.25 kg/m
Alloy		EN AW-6060

### Order data

Order data	Order number
Glass rail 5 mm	
Standard length 5000 mm	B06-4-5M
Glass rail 5 mm	
Cut to length	B06-4-02-02/...