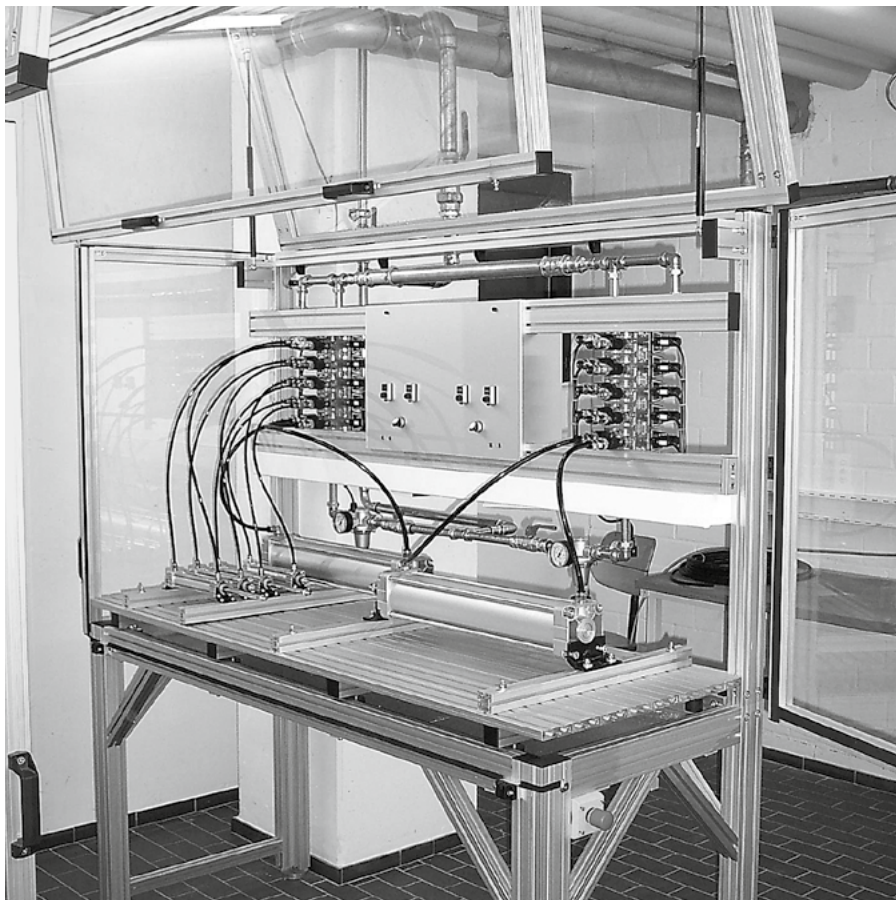
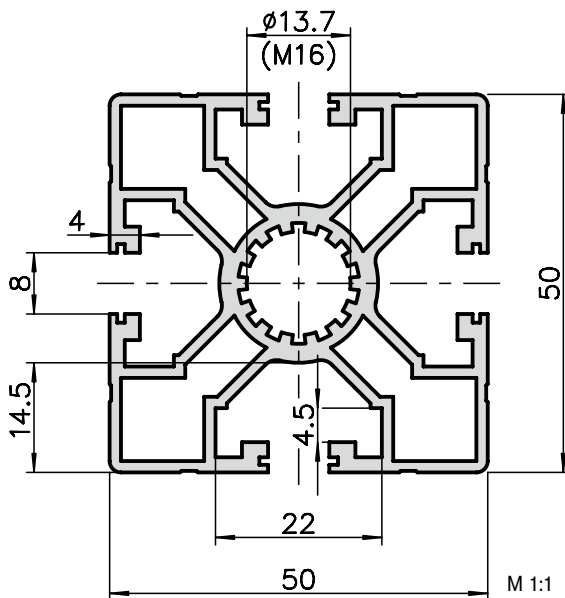
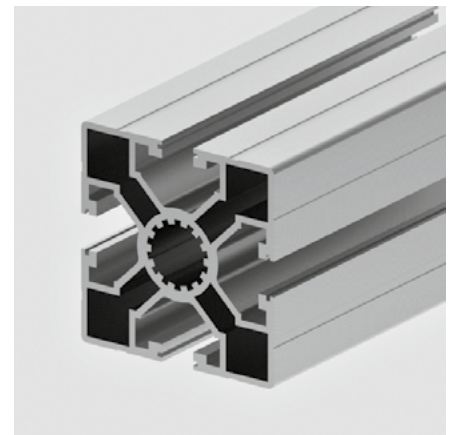


Lightweight extrusion 50x50 type A02-1



Application

The light extrusion 50x50 offers many possibilities to the budget-minded engineer. Whether for machine guarding or machine chassis, in a light build version, this universal extrusion offers tremendous value.



Technical data

$I_{x,y}$	=	20.56 cm ⁴
$W_{x,y}$	=	6.42 cm ³
Cross-section area	=	6.71 cm ²
Weight	=	2.17 kg/m
Alloy		EN AW-6063

Order data

Order number

Lightweight extrusion 50x50	
Standard length 5000 mm	A02-1-5M
Lightweight extrusion 50x50	
Cut to length	A02-1-02-02/...
Extra machining	Pages 43-47