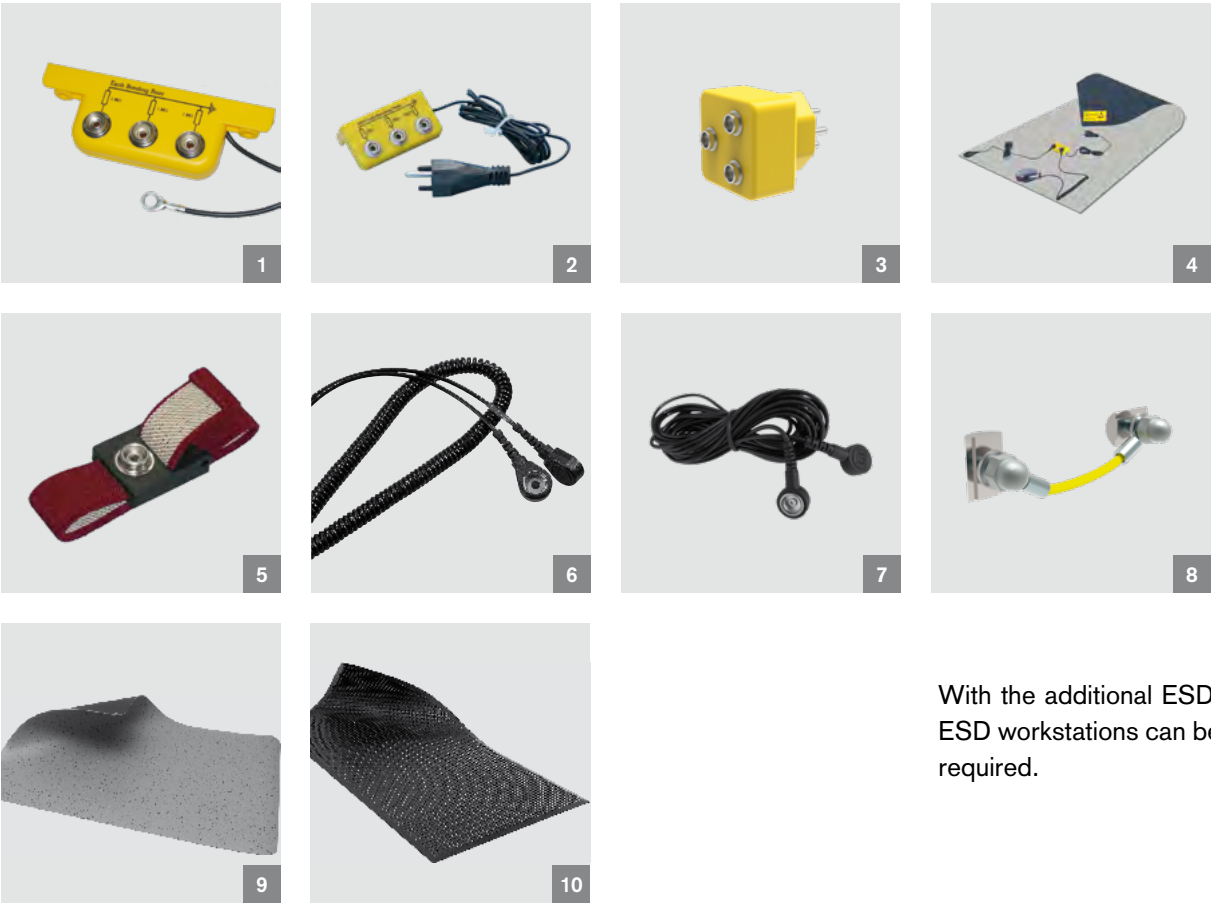


ESD accessories



With the additional ESD components,  
ESD workstations can be expanded as  
required.

Technical data

	Order details	Order number
1	Earth connection bracket with 3 x 10 mm press studs	N0602
2	Earthing connection bracket with 3 x 10 mm, T12 earthing cable	N0603
3	Earthing plug 3 x DK10 / T12	N4037
4	Workstation set 120 x 60 cm, grey, with earth connection bracket – Dissipative table covering 120 x 60 cm, with 3 m cable – Fabric wrist strap with spiral cable – Earth connection bracket with T12 mains plug – Workstation labelling plate	N0605
5	Fabric wrist strap bordeaux, 10 mm	N0606
6	Cable spiral 2.4 m DK10 (w)/DK10(w)	N4036
7	Straight cable 1.5 m, 10 mm (w) / 10 mm (w)	N0604
8	Cable bridge base C	C36-00
9	Floor mat, 150 x 200 mm, chair castor resistant, dissipative	N4039
10	Floor mat 65 x 95 cm, dissipative	N4038