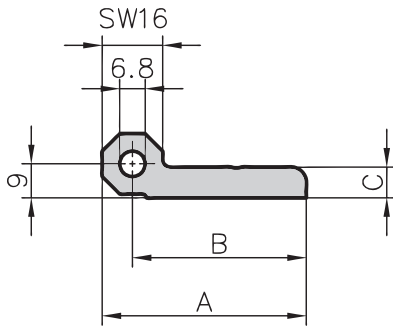


Hinge extrusion type A60-6/C60-6



Measurement data

Typ	A	B	C
A60-6	54	46	8
C60-6	44	36	8

Application

Source material for the unHINGABLE and the heavy duty hinges or for producing special hinges.

Specification

Aluminium raw



Technical data

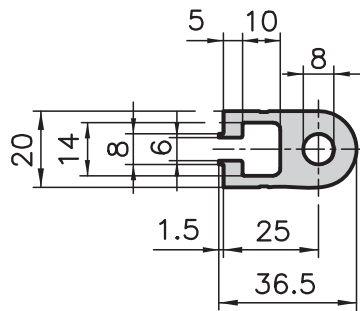
	A60-6	C60-6
Cross section area	= 4.91 cm ²	4.11 cm ²
Weight	= 1.33 kg/m	1.11 kg/m

Order data

Order number

17x54 hinge extrusion	
Standard length 3000 mm	A60-6-00/3000
17x54 hinge extrusion	
Cut to length	A60-6-02-02/...
17x44 hinge extrusion	
Standard length 3000 mm	C60-6-00/3000
17x44 hinge extrusion	
Cut to length	C60-6-02-02/...

Hinge extrusion type A60-5



Application

Source material for special hinges or as bearing for simple rotating-mechanism.

Specification

Aluminium anodised



Technical data

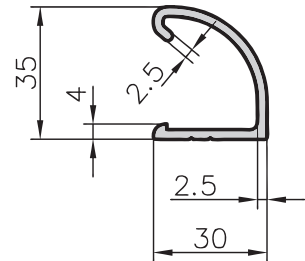
Cross-section area	= 4.40 cm ²
Weight	= 1.19 kg/m

Order data

Order number

20x36.5 hinge extrusion	
Standard length 5000 mm	A60-5-00/5000
20x36.5 hinge extrusion	
Cut to length	A60-5-02-02/...

Handle strip extrusion type B65-5

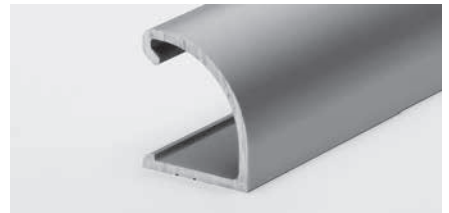


Application

Source material for handle strips or handles with special-length.

Specification

Aluminium anodised



Technical data

Cross-section area	= 2.18 cm ²
Weight	= 0.59 kg/m

Order data

Order number

30x35 handle strip extrusion	
Standard length 5000 mm	B65-5-00/5000
30x35 handle strip extrusion	
Cut to length	B65-5-02-02/...