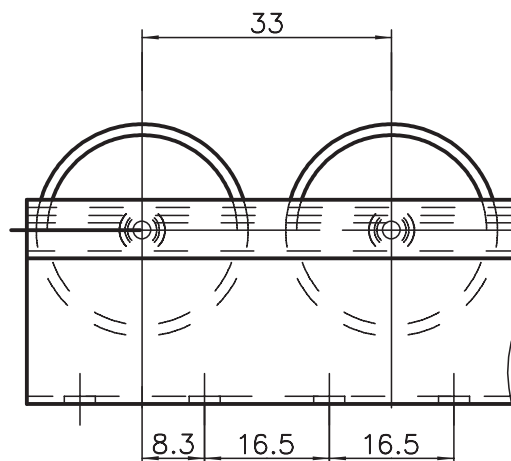
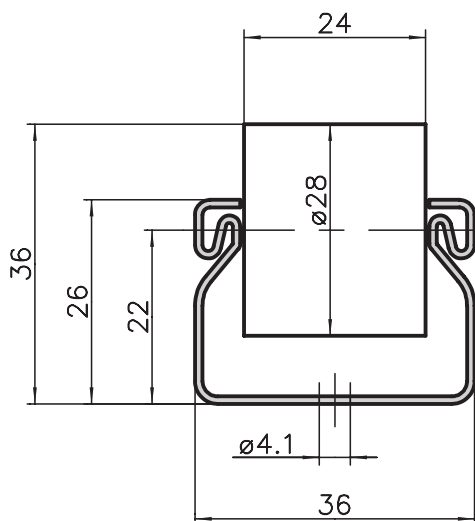


Roller tracks, flat



Application

These roller tracks are ideal for use with storage and transportation racks. For lightweight transport of items, this self-supporting rail can be used for up to 3m. For packaging tables, assembly workstations and devices in process operations, these simplify the transport of goods and logistics.

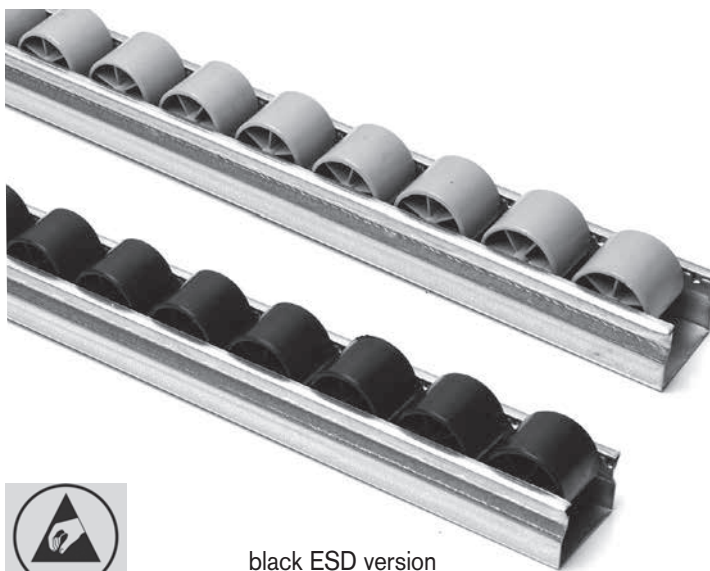
Specification

Steel rail
Plastic rollers with steel axes

Technical description

Distance between roller axes is 33mm, weight: 0.86 kg/m; rollers made of polypropylene, diameter 28mm, width 24mm, ESD version with electrostatic discharge (resistance coefficient during throughput of electricity of 28.8Ω/cm²)

Rollers available in other colours on request when ordering more than 300 m.



black ESD version

Order data	Order number
Roller track	
Standard length	L80-1-00/3000
Cut to length	L80-1-02-02/...
ESD roller track	
Standard length	L80-1-ESD-00/3000
Cut to length	L80-1-ESD-02-02/...