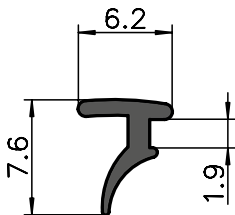


Clamping sealing strip
Base 30/20

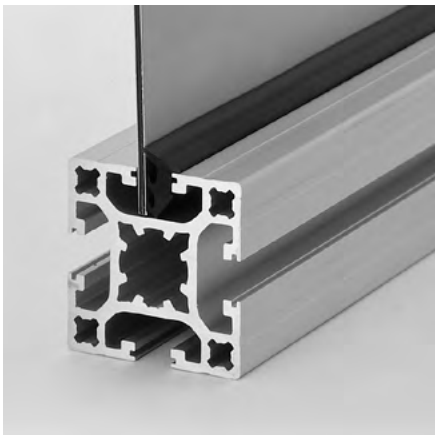


Application

This sealing strip is used to stabilise and seal panels in the extrusion cross-sections of base 20 and 30. It is fitted after the panels are inserted.

Specification

TPE black, oil-resistant
For panels 5–6 mm thick



Measurement data

Panels 5–6 mm thick

Order data	Order number
------------	--------------

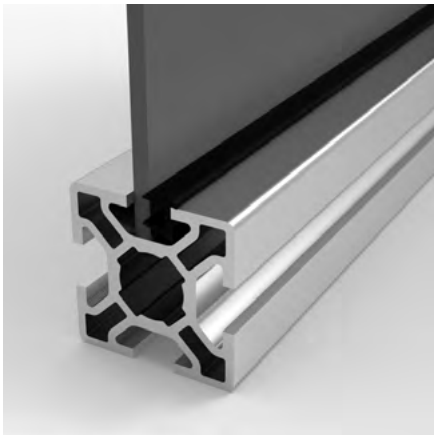
Clamping sealing strip 30/20 base	
Standard length of rolls à 100 m	B39-83-100M
Cut to length	B39-83-02-02/...

Clamping rubber seal



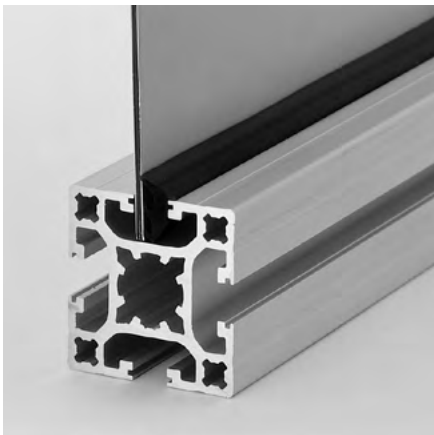
Application

These profiles are used for the installation of panels in the profile groove. The installation is done after the panels have been inserted. The rubber profiles can simply be pressed into the existing gap. The material automatically results in a damping, sealing and stabilising effect.



Specification

Neoprene rubber black, oil resistant, contains no silicone



Measurement data

Panel thickness	Base 30	Base 40/45/50
1.5 – 2 mm	B39-72	A39-72
3 mm	B39-73	A39-73
4 mm	B39-74	A39-74
5 mm	B39-75	A39-75

Order data

Order number

Base 30

Panel thickness 1.5 – 2 mm	
Standard length roll: 200 m	B39-72-200M
Cut to length	B39-72-02-02/...
Panel thickness 3 mm	
Standard length roll: 200 m	B39-73-200M
Cut to length	B39-73-02-02/...
Panel thickness 4 mm	
Standard length roll: 200 m	B39-74-200M
Cut to length	B39-74-02-02/...
Panel thickness 5 mm	
Standard length roll: 200 m	B39-75-200M
Cut to length	B39-75-02-02/...

Base 40/45/50

Panel thickness 1.5 – 2 mm	
Standard length roll: 200 m	A39-72-200M
Cut to length	A39-72-02-02/...
Panel thickness 3 mm	
Standard length roll: 200 m	A39-73-200M
Cut to length	A39-73-02-02/...
Panel thickness 4 mm	
Standard length roll: 200 m	A39-74-200M
Cut to length	A39-74-02-02/...
Panel thickness 5 mm	
Standard length roll: 200 m	A39-75-200M
Cut to length	A39-75-02-02/...